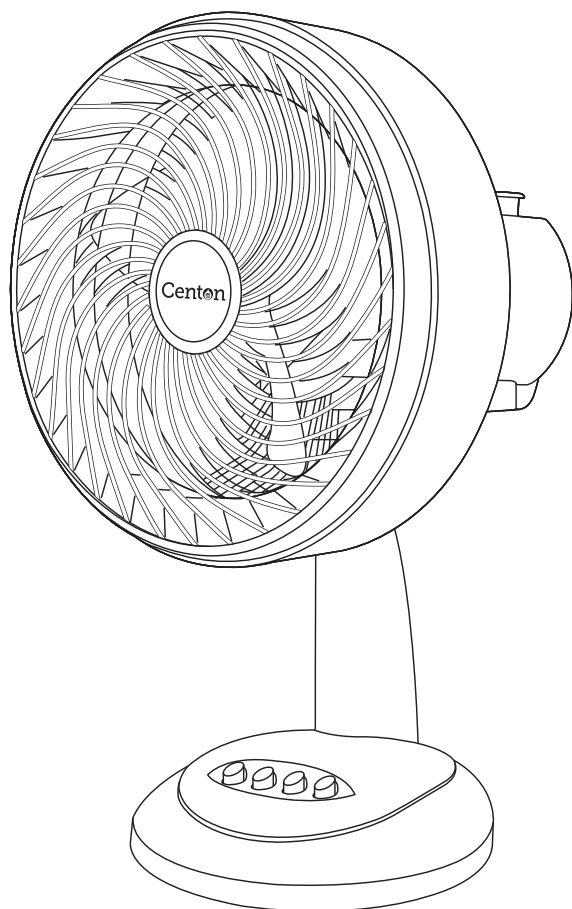


Centon

Typhoon

TABLE FAN



INSTRUCTION MANUAL

Please read this manual carefully before operating this product.
Keep this manual handy for future reference.

CAUTION

1. This appliance is not intended for use by persons (including children) with reduced physical, sensory, or mental capabilities, or lack of experience and knowledge, unless they have been given supervision or instruction concerning the use of the appliance by a person responsible for their safety. Children should be supervised to ensure that they do not play with the appliance.
2. If the supply cord is damaged, it must be replaced by the manufacturer, its service agent, or similarly qualified persons in order to avoid a hazard.
3. Ensure that the fan is switched off from the supply mains before removing the guards for cleaning and maintenance purposes.
4. Switch off and unplug the outlet when the product is not in use.
5. This product is intended for normal domestic / household use only.
6. Always operate the product from a power source of the same voltage, frequency, and rating as indicated on the product identification plate.
7. Do not use this fan with any solid-state speed control device to reduce the risk of electric shock.
8. Do not leave the fan running unattended.
9. Do not operate the product if it is dropped, damaged, or showing signs of malfunction. Do not operate the product with a damaged plug or cord.
10. Do not immerse or expose the product or flexible cord to rain, moisture, or any other liquid.
11. This product should not be used in the immediate vicinity of water, such as bathtubs, wash bowls, swimming pools, etc.
12. Avoid contact with moving parts. Do not insert any body parts (e.g., fingers) or objects through the Fan Guards when the fan is operating.
13. Do not cover the Fan Guards, or operate in close proximity to curtains, etc.

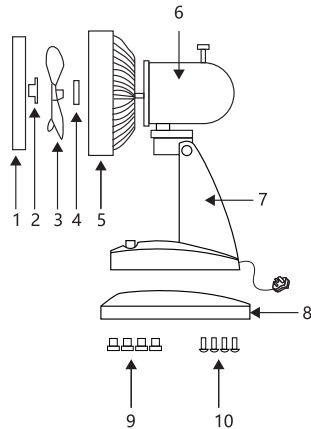
CLEANING & MAINTENANCE

1. Before cleaning and maintaining, disconnect the power supply for safety purposes.
2. Always keep the air vents at the rear motor cover clean.
3. Handle the blade with care during cleaning.
4. Fan parts such as the fan blade, rear guard, and front guard should be cleaned using mild soap / damp cloth or sponge. Do not allow any water or other liquid to enter the motor.

Note: Do not use harsh detergents, chemical cleaners, or solvents as they may damage the surface of the appliance.

PARTS IDENTIFICATION

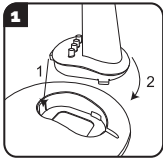
- | | |
|-------------------|----------------|
| 1. Front Guard | 6. Motor |
| 2. Spinner | 7. Fan Body |
| 3. Fan Blade | 8. Base |
| 4. Rear Guard Nut | 9. Foot Rubber |
| 5. Rear Guard | 10. Screw |



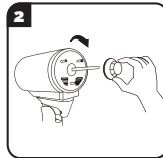
SPECIFICATIONS

Model	Typhoon
Blade Size	180mm
Voltage	220-240V ~50/60Hz
Power	90watt
Max. RPM	2100
Speed	3

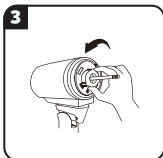
INSTALLATION



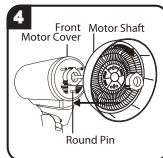
Place the fan body onto the base. Connect the fan body from the bottom with the rubber and screw.



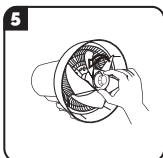
Unpack all the parts from the carton. Remove the spinner in a clockwise direction.



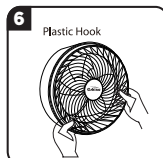
Remove the Rear Guard Lock in an anti-clockwise direction.



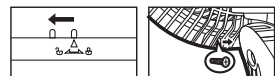
Fix the Rear Guard onto the 3 round pins at the Front Motor Cover. Secure the Rear Guard Lock in a clockwise direction.



Insert the Fan Blade onto the Motor Shaft. Lock the Fan Blade with the Spinner in an anti-clockwise direction. Make sure the Rear Guard Lock and Spinner are secured tightly.



Locate the arrow at the 'Unlock' position and turn clockwise to lock the front guard. Screw back the safety screw at the rear guard for safety purposes.



CENTON HOME APPLIANCES SDN. BHD. [1289180-P]

21, Jalan Seruling 58, Taman Klang Jaya,
41200 Klang, Selangor, Malaysia



www.centon.my



support@centonia.my